

# NORAMCO FITNESS

13901 Highway 105 West  
Conroe, TX 77304

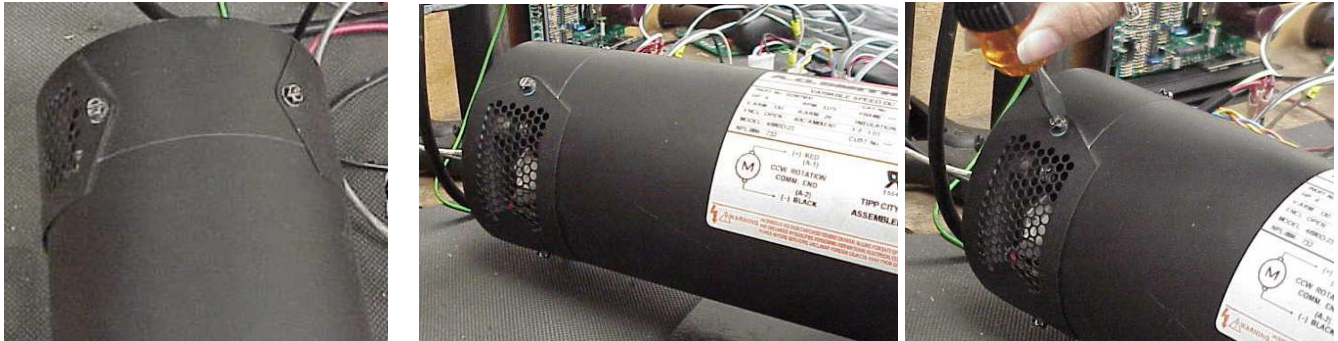
[www.NoramcoFitness.com](http://www.NoramcoFitness.com)

## Motor Brush Replacement

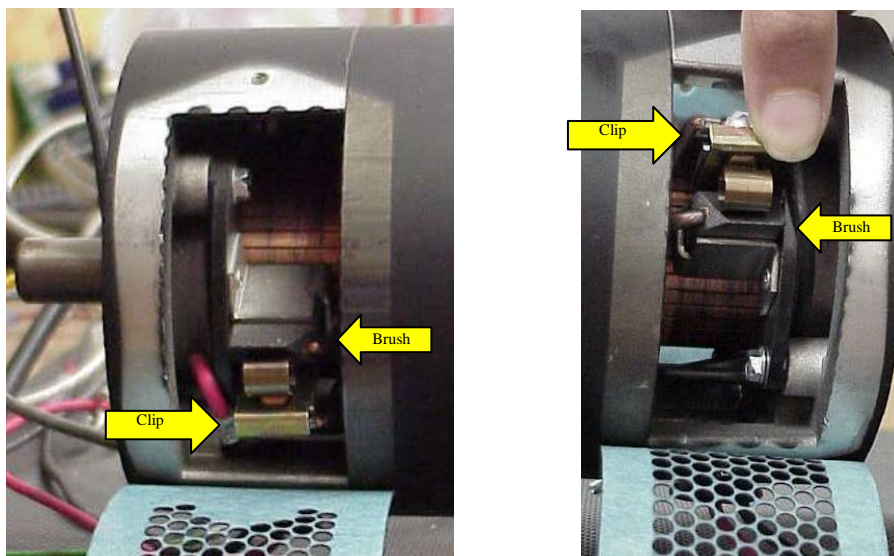
**Never** use a sanding stone or comm stone on the commutator of a Noramco Fitness Treadmill motor. The commutator of a motor that has been properly broken in has a fairly thick layer of graphite build up on it. It should be completely black to provide the proper “slip” for the brushes.

**Make sure that the treadmill is unplugged before beginning this procedure.**

Locate the two motor vent flaps at the end of the motor and remove the upper screw with a flat-head screwdriver, or a ¼ - inch nut driver.



Locate the brush and the clip holding it in place. On one side of the motor, the clip will be under the brush, and on the other side it will be on top of the brush.

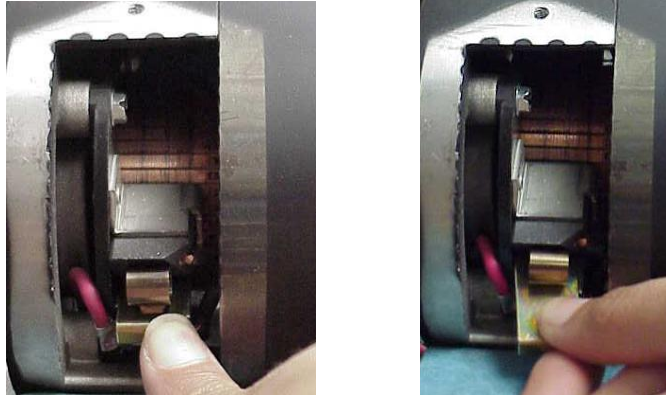


# NORAMCO FITNESS

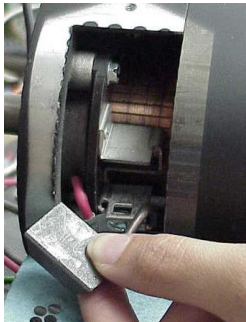
13901 Highway 105 West  
Conroe, TX 77304

[www.NoramcoFitness.com](http://www.NoramcoFitness.com)

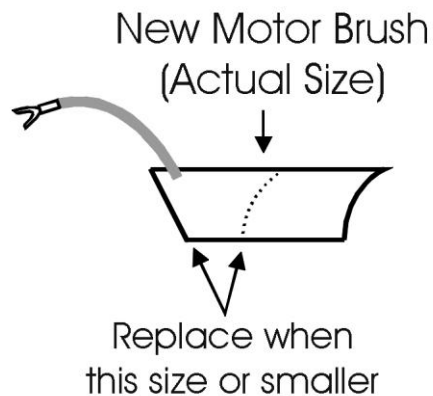
Push the clip in and up (towards the brush) to free the catch on the bottom. The clip will slide out.



Pull the brush out of the slot and check the size. If the longest side is less than  $\frac{3}{4}$  inch long, replace both brushes in the motor.



Use the diagram below to check the brush size.

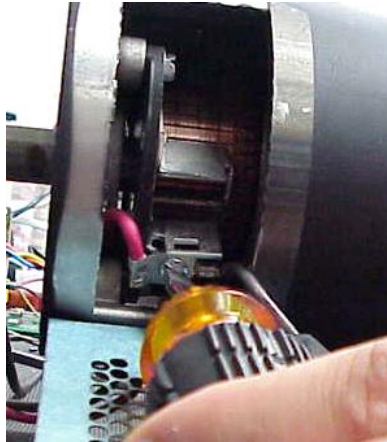


# NORAMCO FITNESS

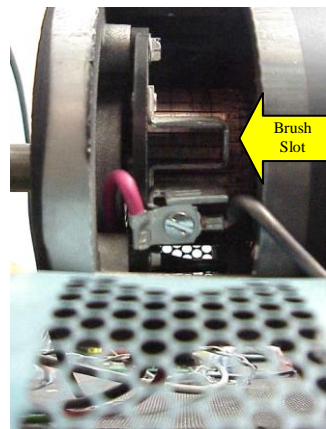
13901 Highway 105 West  
Conroe, TX 77304

[www.NoramcoFitness.com](http://www.NoramcoFitness.com)

The brush has a wire attached to one corner that is held in place in the motor with a screw. Loosen the retaining screw just enough to allow the U-shaped contact to slide out. **Be careful not to crack or break the plastic brush housing.** You may need to hold the plastic side-piece still with a pair of pliers while turning the retaining screw. Replace with the wire from the new brush and re-tighten the screw securely.



Slide the brush back in place in the top part of the slot, and hold in place while re-inserting the clip.



Push the clip in and up (towards the brush) to re-engage the catch.  
Replace the vent flap and the screw.  
Repeat for the brush on the other side of the motor.

**Never use a sanding stone or comm stone on the commutator of a Noramco Fitness Treadmill motor. The commutator of a motor that has been properly broken in has a fairly thick layer of graphite build up on it. It should be completely black to provide the proper “slip” for the brushes.**